

**NATIONAL INSTITUTE OF TECHNOLOGY KARNATAKA,
SURATHKAL**

Mangaluru- 575025, Karnataka State



INFORMATION BULLETIN
Admission to M. Tech, M. Tech (Research),
M.B.A, M.C.A, M.Sc.
and
Ph.D. Programmes
2024-25

Contents

1 General

1.1	About the Institute	1
1.2	Location	2
1.3	Self- contained campus	2
1.4	Computing facilities and campus network	2
1.5	Library Facilities	3
1.6	Disciplines of Study	3

2 M.Tech./ M.Tech (R)/ MCA/MBA/ M.Sc admissions

2.1	2.1.A	Flow chart for M.Tech. admissions	5
	2.1.B	Flow chart for M.Tech.(R) admissions	
2.2		Guidelines for M.Tech./ M.Tech (R) admissions	
	A	M.Tech. admissions	6
	B	M.Tech. (R) admissions	6
	C	Minimum qualification/Eligibility for M.Tech. and M.Tech (R) admissions	7
	D	List of post graduate programs in Engineering	7
	E	Qualifying Examinations for M Tech admissions	9
2.3		Guidelines for MBA/MCA/ M.Sc admissions	
	A	MBA admissions	13
	B	MCA admissions	13
	C	MSc (Physics and Chemistry) admissions	14

3 PhD Admission

3.1	Flow chart for PhD Admissions	15
3.2	Guidelines for PhD Admissions	16
A	Scholarship seats	16
B	Non-Scholarship seats	16
C	Minimum qualification/Eligibility	17
D	Specializations in Ph.D. Programme	18
E	Qualifying Examinations for PhD	20

4 Selection Procedure

A	M. Tech	21
B	M.Tech (Research)	21
C	MBA	21
D	MCA	21
E	M.Sc.	21
F	Ph. D.	21

5 How to apply 22

6 Calendar of Events for Admission to M.Tech (Self-financed/Sponsored/Research) and Ph.D. Programmes 2024-25. 23

7 Intake for M.Tech , M.Tech (Research) and Ph.D. Programmes:

A	Intake for M.Tech (Sponsored Programme) for 2024-25	24
B	Intake for M.Tech (Research) for 2024-25	25
C	Intake for M.B.A for 2024-25	25
D	Intake for M.C.A for 2024-25	26

E	Intake for M.Sc.(Chemistry)	26
F	Intake for M.Sc.(Physics)	26
G	Intake for Ph.D. Programme for 2024-25: Full time under Institute's Scholarship	26
H	Intake for M. Tech M.Tech, M.B.A, M.C.A, M.Sc.(Self-financed) for 2024-25	27

8 Documents to be produced:

A	At the time of counselling/written test/interview	29
B	Documents to be submitted at the time of admission	29

9 Financial Assistance

A	M.Tech. / M.Tech. (Research) Programs	31
B	Ph.D. Programme	31
C	Sponsored Candidates	32

10 Fees and Deposits

A	Fee structure for M.Tech & M.Tech (Research) programme for the year 2024-25	33
B	Fee Structure for the Internal Part Time candidate for Regular (Permanent) staff of the institute for the year 2024-25	33
C	Fee structure for M.B.A Programme (Regular admission) 2024-25	34
D	Fee structure for M.C.A Programme (Regular admission) 2024-25	34
E	Fee structure for M.Sc. Programme (Regular admission) 2024-25	35
F	Fee structure for self-financed M.Tech. Programme for the year 2024-25	35

G	Fee structure for Self-Financed M.B.A Programme for the year 2024-25	36
H	Fee structure for Self-Financed M.Sc. (Physics & Chemistry) for the year 2024-25	37
I	Fee structure for Self-Financed M.C.A Programme for the year 2024-25	38
J	Fee structure for Ph.D. Programme for the year 2024-25	39
K	Fee structure for the internal Regular Faculty /Staff for Ph.D Programme. (Only for regular staff of the Institute) for the year 2024-25	39
L	Provisional Mess Fees (At Hostel Office) for Hostellers (first semester) for the year 2024-25	40

NATIONAL INSTITUTE OF TECHNOLOGY KARNATAKA, SURATHKAL

1. General

1.1 About the Institute

The National Institute of Technology Karnataka (NITK), Surathkal is a prestigious top ranked Institute in India, with a rich history dating back to 1960. The Institute is declared as Institute of national importance by the government of India as per the NIT act 2007 and is governed by the rules and statutes of the NIT Act, which indicates its affiliation with the national-level framework set for technical education institutions in India.

The institution has played a significant role in providing quality technical education and fostering research and development over the years and contributed significantly to the advancement of knowledge and technology. Institute has maintained a long-standing tradition of research spanning both conventional and modern areas of engineering and sciences across all the departments. The active involvement in application-oriented research to address societal challenges with a range of focus areas such as environment, water resources, materials, rock mechanics, manufacturing, new structures, VLSI, Power electronics, machine learning and artificial intelligence reflects a holistic and forward-thinking approach and highlights a diverse and comprehensive approach to research. With this kind of research, the Institute contributes not only to the academic and scientific community but also directly benefits society by addressing real-world issues.

NITK has a robust and inclusive admission process, attracting a diverse pool of students both nationally and internationally. The use of standardized entrance exams like JEE Mains for B.Tech., GATE for M.Tech., NIMCET for MCA, CAT/MAT/GATE for MBA, and JAM for M.Sc. reflects a commitment to a merit-based selection process. The inclusion of foreign students through exchange programs, Ministry of External Affairs (MEA), Indian Council for Cultural Relations (ICCR), and the Direct Admission to Students Abroad (DASA) scheme adds to the Institute's global perspective and fosters cultural diversity. The availability of scholarship seats for M.Tech. programs based on GATE scores, as well as the provision for sponsored students, showcases a commitment to supporting academic excellence and providing opportunities to deserving candidates. Additionally, the focus on self-financed categories for M.Tech., M.Sc., MCA, and MBA programs demonstrates the Institute's flexibility in accommodating a broader range of students. The Institute's emphasis on doctoral programs, including admitting candidates with Institute fellowships and external sponsored candidates, speaks to its dedication to advanced research and academic excellence. The strong placement record is a testament to the quality of education and training provided by NITK, as evidenced by the high demand for its graduates in top industries and companies. This recognition as one of the best institutions in the country for student placements further underscores the Institute's commitment to producing well-rounded and highly employable graduates.

1.2. Location

NITK is located in Surathkal of Mangalore City, Dakshina kannada district, Karnataka, India. It is situated along the Kanyakumari-Mumbai National Highway 66. Mangalore, also known as Mangaluru, is a coastal city in the southwestern part of Karnataka, and NITK is positioned in the outskirts of this city with a campus set amid 300 acres of lush green surroundings with the Western Ghat Mountains to the east and the Arabian sea to the west. With a temperature range of 18 to 38 degrees Celsius, the location has a fairly moderate and pleasant climate throughout the year and the fact that the campus is situated on the sea shore adds an extra element of appeal with a refreshing and healthy climate. This location provides not only a peaceful and conducive environment for academic activities but also convenient connectivity to major cities in India and international destinations via road, rail, and air. The national highway 66 is a major artery that runs along the western coast of India, facilitating easy travel to and from major cities. The presence of the Mangalore Railway Station, located about 20 km away from the campus, ensures convenient rail access. Additionally, the Surathkal Railway Station being

approximately 3 km away further enhances the connectivity for the NITK community. The Mangalore (Bajpe) airport being in close proximity, about 30 km away, adds to the ease of transportation. This airport serves as a vital link for both domestic and international destinations, making it convenient for students, faculty, and visitors to travel. This comprehensive connectivity by road, rail, and air not only facilitates the movement of individuals associated with the Institute but also supports collaborative activities, academic exchange programs, and other engagements with institutions and professionals both nationally and internationally.

1.3. Self- contained campus

NITK provides a comprehensive and well-equipped residential campus with an environment that can significantly contribute to the overall development by providing not just academic facilities but also fostering a sense of community, social interactions, and a balanced lifestyle. There are 13 hostel blocks for boys and 6 blocks for girls with accommodation capacity of about 5500 boys and 1200 girl students and with independent messes of various types catering to diverse tastes. The availability of a good number of faculty quarters on campus contributes to a strong sense of community and a diverse and dynamic campus culture enhancing the overall experience for students.

There are ample opportunities for both outdoor and indoor games furnishing to a diverse and well-rounded approach to sports and recreational activities on campus, indicating a commitment to promote physical health, team spirit, and a holistic approach. Additionally, availability of swimming pool and a gymnasium facility on the campus underscores the Institute's commitment to promoting fitness and overall well-being among its students. Inclusion of N.C.C. and N.S.S. as prominent extracurricular activities reflects a commitment to holistic education, focusing on the development of leadership qualities, social responsibility, and active community involvement among the students. The Institute supports a host of activities through various clubs such as music, photography, web enthusiast and dramatic etc., enhancing the overall campus experience, promoting a well-rounded education that goes beyond academic learning.

A central library provided to meet the academic needs of students and faculty serves as a resource hub, offering a diverse collection of books, journals, and other academic materials. The well-equipped health care center ensures the necessary medical support and services for students and faculty, and plays a pivotal role in creating a campus environment that prioritizes the health and well-being of the community. The branches of State Bank of India and Canara Bank, along with ATM facilities, offer convenient banking services for the campus community and the presence of post office enhances the overall accessibility and convenience for communication needs. Two canteens cater to the culinary needs of the residents.

1.4. Computing facilities and campus network

NITK has implemented a campus-wide network that spans all areas, including academic buildings, guest houses, student hostels, and campus residences. The campus backbone services are provided through approximately 20 kilometers of 12/24 core Optical Fiber Cable (OFC). The backbone supports varying speeds, including 1 Gbps and 10 Gbps connections to different buildings. Broadband connectivity is extended to campus residences, providing high-speed internet access to residents. Different entities on the campus, including departments, residences, directorate, administrative blocks, guest houses, and hostels, are individually connected to the core switch. Hostel blocks are integrated into the academic blocks of NITK, allowing for seamless connectivity and sharing of internet bandwidth across the Institute. The Institute ensures round-the-clock internet connectivity, providing students, faculty, and staff with continuous access to online resources and services. Journals subscribed through the INDEST consortium are available throughout the campus LAN, ensuring that academic resources are easily accessible to the entire campus community. This detailed network infrastructure enhances communication, collaboration, and access to information across the campus. The emphasis on high-speed connectivity, integration of networks, and access to academic resources reflects a commitment to providing a technologically advanced and well-connected environment for both academic and residential aspects of campus life.

In order to support seamless migration of connectivity between access points for users, approximately 1000 indoor access points and 40 outdoor access points are deployed via Wi-Fi network which is an extension of the wired networks. The NITK data centre serves as an integration hub for Optical Fiber Cable (OFC)/backbone infrastructure housing internet connections to Bharat Sanchar Nigam Limited (BSNL) and the national knowledge network. The centre is equipped with networking hardware to facilitate efficient data transfer and communication across the entire network. This ensures that the Institute has reliable and redundant connections to the internet, catering to the diverse needs of academic, research, and administrative activities. Main servers are connected to the data centre network. The Center for Computational Computing (CCC) utilizes virtualization with the Proxmox virtualization environment and Ubuntu system containerization environment. CCC hosts a campus-wide license for MATLAB, Simulink, and companion products. Faculty, researchers, and students at NITK have the flexibility to download and install products like MATLAB, Simulink, and companion products which contributes to a more versatile and accessible computing environment for the academic community.

1.5. Library Facilities

Central Library at NITK Surathkal serves as a vital hub for academic and research activities, playing a key role in fostering an environment of learning, exploration, and knowledge dissemination. With a rich collection of 1.5 lakh print materials, including reference books, textbooks, CDs, etc., the library provides a diverse range of resources covering Engineering, Science, Social Sciences, Humanities, and Management. The library subscribes to a core collection of print journals (100 plus) and an extensive range of electronic resources. The electronic resources include e-journals (12045), e-databases (25), and e-books (11202), providing a wealth of information in digital formats. The library is a core member of e-ShodhSindu, a Consortia for Higher Education E-Resources. This consortium provides access to over 10,000 qualitative electronic resources, including full-text, bibliographic, and factual databases, enhancing research capabilities. Students and researchers have access to various reputable online scientific databases, including those from American Chemical Society, American Physical Society, IoP, Royal Society of Chemistry, Emerald, Taylor & Francis, American Mathematical Society, Annual Reviews, ASME, IEEE, JSTOR, MathScinet, Nature, Science-Direct, SpringerLink, and more. The library subscribes to the premium version of Grammarly, an automated grammar tutor and revision tool, aiding students in writing effective and error-free documents. It also offers a Plagiarism Checking Service using the "Ouriginal" web tool, particularly beneficial for Ph.D. and M.Tech by Research students. The provision of remote access to e-resources and a dedicated mobile app adds flexibility for users, allowing them to access valuable information beyond the physical library space.

Library has been fully computerised with integrated web based library management software to Koha, which enables users to search real-time book status and reservations. The library is fully air conditioned with more than 1000 seating capacity. Newly established eLibrary Complex has the State-of-the-Art modern IT facilities with e-Studio for lecture capturing and live streaming facility, 2 Cyber Libraries with 50+ computers to conduct hands-on training, 2 Seminar Halls of 50+ Capacity each, 8 Discussion Rooms, dedicated Research Scholars Section, Digital Reading Rooms, Laptop Zones etc. catering to more than 7000 on campus library users 24X7 along with in-housed cafeteria.

1.6 Disciplines of Study

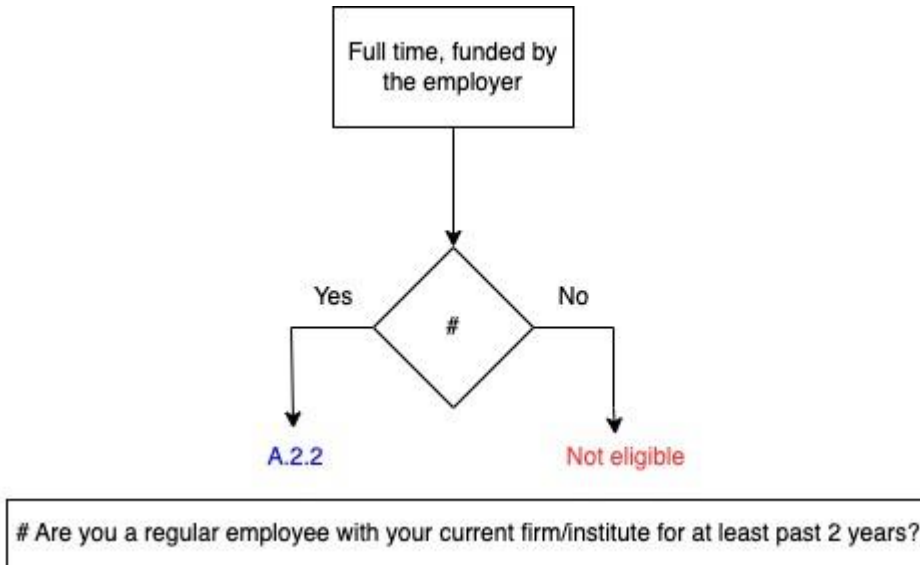
The Institute offers undergraduate programmes in 11 disciplines and post-graduate programmes in 32 specialized areas. The Institute also offers facilities for research leading to Ph.D. degrees in various branches of Engineering, Science and Humanities & Social Sciences. The academic responsibilities are shared by the following 14 Teaching Departments:

1. Chemical Engineering
2. Chemistry
3. Civil Engineering
4. Computer Science and Engineering

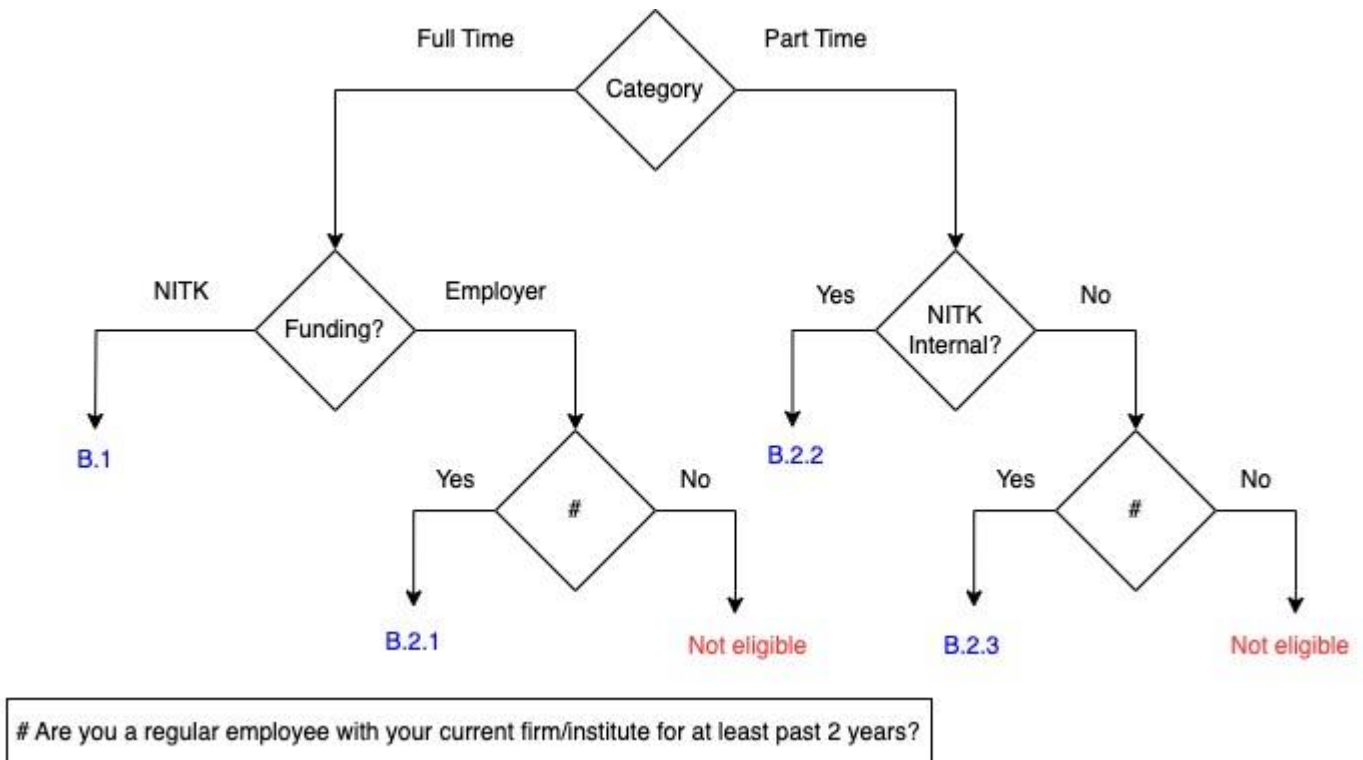
5. Electrical & Electronics Engineering
6. Electronics & Communication Engineering
7. Information Technology
8. Mathematical and Computational Sciences
9. Mechanical Engineering
10. Metallurgical & Materials Engineering
11. Mining Engineering
12. Physics
13. School of Humanities, Social Sciences and Management
14. Water Resources and Ocean Engineering (Formerly Applied Mechanics & Hydraulics Department)

2. M.Tech./ M.Tech. (R)/ M.B.A./M.C.A./ M.Sc. admissions

2.1.A Flow chart for M.Tech. admissions



2.1.B Flow chart for M.Tech. (R) admissions



2.2 Guidelines for M.Tech./ M.Tech. (R) admissions

A. M.Tech. admissions

A.1 Scholarship seats

A.2 Non-Scholarship seats

A.2.1 QIP seats (Full time)

A.2.2 Sponsored seats from Industry, Educational Institutes or other organizations (Full time)

A.2.3 Self-financed seats (Full time)

[separate notification for admission to M.Tech. (self-financed) programme will be released on institute website at a later date.]

B. M.Tech. (R) admissions

B.1 Scholarship seats

B.2 Non-Scholarship seats

B.2.1 Sponsored seats from Industry, Educational Institutes or other organizations (Full time)

B.2.2 Internal Registrants - sponsored institute or project staff of NITK (part time)

B.2.3 External registrants- sponsored seats from Industry, Educational Institutes or other organizations (part time)

Student of the type **A.1** and **B.1** should possess a valid GATE score and will receive scholarship for the duration of four semesters, which is subjected to scholarship rules of MOE. The allotment of seats for A.1 category is based on GATE score **done by Centralized counselling through CCMT-2024**. Departments, Specialization offered and Qualifying Examinations for M. Tech will be available in CCMT-2024 website.

The allotment of seats for **A.2.2, A.2.3, B.1, and B.2** are done based on performance in qualifying examination along with a national level written test and a technical interview, both conducted in physical mode at NITK, with due weightage for each component as decided by the DPGC of the concerned departments.

Student of type **A.2.1** are admitted under Quality Improvement Programme (QIP), being implemented and monitored by All India Council for Technical Education. Only sponsored teachers who are permanent faculty members of AICTE recognized degree/diploma level colleges are eligible to apply.

Student of type **A.2.2** and **B.2.1** shall be sponsored and financed by the sponsoring organization. They are not entitled for Institute scholarship. The candidate must have minimum of 2 years of full-

time work experience in the sponsoring organization. Along with the application candidate should produce a sponsorship-cum-clearance certificate in the format provided by NITK.

Student of type **A.2.3** are self- financed type who are not entitled for Institute scholarship. They shall fulfil the qualifying degree eligibility requirements as prescribed for the students of other types. The admission will be based on performance in qualifying examination, national level written test and a technical interview, with due weightage for each component as decided by the DPGC of the concerned departments.

Student of type **B.2.2** are internal registrants who are sponsored institute or project staff of NITK and are required to produce sponsorship-cum-clearance certificate from the Director, NITK.

Student of type **B.2.3** are sponsored by Industry, Educational Institutes or other organizations and are expected to carry-out their research work in their parent organization after fulfilling certain prerequisites in the Institute. The candidate must have minimum of 2 years of full-time work experience in the sponsoring organization. They may have an additional research guide from the sponsoring organization. Residential requirement may be waived for such candidates and they are expected to complete their course work by opting for (pre-approved by DPGC) certified courses.

C Minimum qualification/Eligibility for M.Tech. and M.Tech. (R) admissions

Admission to a M.Tech. and M. Tech. (R) Programme shall be open to Indian nationals who have passed the prescribed qualifying examination with a Cumulative Grade Point Average (CGPA) of at least 6.5 in the 0-10 scale grading system, or not less than 60% marks in the aggregate (taking into account the marks scored in all the subjects of all the public/university examinations conducted during the entire prescribed period for the degree programme). However, this prescribed minimum shall be a CGPA of 6.0 or 55% marks in the aggregate for SC/ST/PwD candidates.

D List of post graduate programs in Engineering

The Engineering Departments offering the postgraduate programs which include M.Tech., M.Tech. (Research), are as follows. M.Tech. (Research) seats are available in all the departments.

a) Chemical Engineering

- | | | |
|-------------------|---|------------------------------------|
| i) M.Tech. (CG) | - | Chemical Engineering |
| ii) M.Tech. (ES) | - | Environmental Science & Technology |
| iii) M.Tech. (IB) | - | Industrial Biotechnology |

b) Civil Engineering

- | | | |
|--------------------|---|---|
| iv) M.Tech. (ST) | - | Structural Engineering |
| v) M.Tech. (GT) | - | Geotechnical Engineering |
| vi) M.Tech. (EN) | - | Environmental Engineering |
| vii) M.Tech. (TS) | - | Transportation Engineering |
| viii) M.Tech. (CM) | - | Construction Technology and Management
(Includes L&T sponsored candidates) |

c) Computer Science and Engineering

ix) M.Tech. (CS)	-	Computer Science and Engineering
x) M.Tech. (IS)	-	Computer Science and Engineering Information Security
d) Electrical & Electronics Engineering		
xi) M.Tech. (PX)	-	Power & Energy Systems
xii) M.Tech. (PE&C)	-	Power Electronics and Control
xiii) M.Tech. (PV)	-	Power Electronics and Control for Electric Vehicle (BSGW sponsored seats only)
e) Electronics & Communication Engineering		
xiv) M.Tech. (VL)	-	VLSI Design
xv) M.Tech. (CN)	-	Communication Engineering & Networks
xvi) M.Tech. (SP)	-	Signal Processing and Machine Learning
f) Information Technology		
xvii) M.Tech. (IT)	-	Information Technology
g) Mathematical & Computational Sciences		
xviii) M.Tech. (CD)	-	Computational and Data Science
h) Mechanical Engineering:		
xix) M.Tech. (TH)	-	Thermal Engineering
xx) M.Tech. (MF)	-	Manufacturing Engineering
xxi) M.Tech. (MC)	-	Mechatronics Engineering.
xxii) M.Tech. (MD)	-	Mechanical Design
i) Metallurgical & Materials Engineering		
xxiii) M.Tech. (PT)	-	Materials Process Technology
xxiv) M.Tech. (ML)	-	Materials Engineering
xxv) M. Tech. (NT)	-	Nanotechnology
j) Mining Engineering		
xxvi) M.Tech. (RT)	-	Rock Excavation Technology and Management. [M.Tech (Research) only]
k) Water Resources and Ocean Engineering		
xxvii) M.Tech. (MS)	-	Marine Structures

- xxviii) M.Tech. (WR) - Water Resources Engineering and Management
 xxix) M.Tech. (GF) - Geoinformatics

E. Qualifying Examinations for M. Tech. admissions

- E.1 Departments, Specialization offered and Qualifying Examinations for M. Tech. will be available in CCMT-2024 website.
 E.2 Departments, Specialization offered and Qualifying Examinations for M. Tech. (Self-financed) M.Tech. (Sponsored) and M.Tech. (Research) are listed below and as per the recommendation of the DPGC of the respective departments.

S.N	Department	Specialization	Qualifying Examination
1.	Chemical Engineering	Chemical Engineering	i) B.E. / B.Tech. in Chemical Engg / Polymer Technology / Ceramic and Cement Technology / Bio-Chemical Engineering / Biotechnology / Petrochemical Engg ii) AMIE (Chemical Engineering) / A.M.I.I.Ch.E.
2.	Chemical Engineering	Environmental Science & Technology	i) B.E. / B.Tech. in Chemical Engg/Mechanical / Mining Engineering/ Polymer Technology / Ceramic and Cement Technology / Environmental Engineering / Bio-Chemical Engineering / Biotechnology / Petrochemical Engineering ii) AMIE (Chemical Engineering) / A.M.I.I.Ch.E.
3.	Chemical Engineering	Industrial Biotechnology	i). B.E. / B.Tech. in Biotechnology ii). B.E. / B.Tech. in Chemical Engineering iii). B.E / B.Tech. in Biochemical Engineering iv). M.Sc. in Biotechnology.
4.	Civil Engineering	Structural Engineering	i) B.E. / B.Tech. / B.Sc.(Engineering) in Civil Engineering /Structural Engineering of any Recognised Indian Universities. ii) AMIE in Civil Engineering.
5.	Civil Engineering	Geotechnical Engineering	i) B.E. / B.Tech. / B.Sc.(Engineering) in Civil Engineering of any Recognised Indian Universities. ii) AMIE in Civil Engineering.
6.	Civil Engineering	Environmental Engineering	i) B.E. / B.Tech. / B.Sc.(Engineering) in Civil Engineering / Chemical/Mechanical / Metallurgical / Mining Engg / Environmental Engg / Bio-Chemical Engineering / Bio- Technology / Agricultural Engg / Biological Science and Bio-Engg / Bio-Sciences & Bio- Engg / Bio-Tech Engineering / Bio Technology & Bio-Chemical Engineering / Chemical & Bio Engineering / Chemical Technology / Civil & Water Management / Civil Engg (Public Health Engg) / Civil Environmental Engg / Environment & Pollution Control / Environmental Science & Engineering / Environment Science and Technology Health Science & Water Engg / Mining Technology / Paper & pulp Engineering / Pulp Technology / Sugar Technology / Water Management / Bio-Engg / Chemical & Bio Engg / Bio-Chemical & Biotechnology Engineering.

			<p>ii) AMIE in Civil Engineering/Chemical Engineering</p> <p>iii) M.Sc. in Applied Chemistry / Earth Sciences / Environmental Sciences / Industrial Chemistry / Life Science / Bio-Chemistry / Bio-Technology</p>
7.	Civil Engineering	Transportation Engineering	<p>i) B.E. / B.Tech. / B.Sc.(Engineering) in Civil Engineering / Highway Engg / Transportations Engg / Civil & Transportation Engineering / Civil & Transportation Technology of any recognised Indian University</p> <p>ii) AMIE in Civil Engineering</p>
8.	Civil Engineering	Construction Technology and Management	<p>i) B.E. / B.Tech. / B.Sc (Engineering) in Civil Engineering / Civil Engg & Planning / Construction & Project Management / Construction Engineering / Construction Engineering Management / Construction Technology / Construction Technology and Management / Mining Engineering / Transportation Engineering / Environmental Engg / Structural Engineering of any recognized Indian University.</p> <p>ii) AMIE in Civil / Mining Engineering.</p> <p>iii) Bachelors' degree in Architecture (B.Arch. / B.E. or B.Tech. in Architecture of any recognized Indian University).</p>
9.	Computer Science and Engineering	Computer Science & Engineering	B.E./B.Tech. in Computer Science and Engineering, B.E./B.Tech. in Computer Engineering, B.E./B.Tech. in Computer Science, B.E./B.Tech. in Artificial Intelligence/Machine Learning, B.E./B.Tech. in Data Science, B.E./B.Tech. in Information Technology, B.E./B.Tech. in Information Science with valid GATE in CS.
10.	Computer Science and Engineering	Computer Science & Engineering - Information Security	B.E./B.Tech. in Computer Science and Engineering, B.E./B.Tech. in Computer Engineering, B.E./B.Tech. in Computer Science, B.E./B.Tech. in Artificial Intelligence/Machine Learning, B.E./B.Tech. in Data Science, B.E./B.Tech. in Information Technology, B.E./B.Tech. in Information Science with valid GATE in CS.
11.	Electrical & Electronics Engineering	Power and Energy Systems	<p>i) B.E. / B.Tech. / B. Sc (Engg) in Electrical Engineering or Electrical & Electronics Engineering</p> <p>ii) AMIE in Electrical Engineering</p>
12.	Electrical & Electronics Engineering	Power Electronics and Control	<p>i) B.E. / B.Tech. / B. Sc (Engg) in Electrical Engineering or Electrical & Electronics Engineering</p> <p>ii) AMIE in Electrical Engineering</p>
13.	Electronics & Communication Engineering	VLSI Design	<p>i) B.E. / B.Tech. / B.Sc. (Engineering) in E&C, Electronics & Telecommunications / Instrumentation Technology / E&E / Computer Science & Engineering / Electronics / Telecommunication / Electronics & Control / Biomedical Engineering/Medical Electronics.</p> <p>ii) AMIETE (Electronics & Telecommunication)</p>

14.	Electronics & Communication Engineering	Communication Engineering and Networks	<p>i) B.E. / B.Tech. / B.Sc. (Engineering) in E&C, Electronics & Telecommunications.</p> <p>ii) AMIETE (Electronics & Telecommunication)</p>
15.	Electronics & Communication Engineering	Signal Processing and Machine Learning	<p>i) B.E. / B.Tech. / B.Sc. (Engineering) in E&C, Electronics & Telecommunications / Instrumentation Technology / E&E / Computer Science & Engineering / Electronics / Telecommunication / Electronics & Control / Biomedical Engineering/Medical Electronics/Information Science/ Information Science and Engineering/Information Technology.</p> <p>ii) AMIETE (Electronics & Telecommunication)</p>
16.	Information Technology	Information Technology	<p>i) B.Tech./ B.E. (Any branch), M.Sc.(CS/IT) and Allied branches, M.Sc.(Math) / M.Sc.(Stat) / M.Sc. (Data Science) / M.C.A. with valid GATE score in CS/IT or Data Science and AI.</p> <p>ii) AMIE in Computer Science & Engineering (by Examination)</p> <p>iii) AMIETE in Computer Science & Engineering and Information Technology (by Examination)</p>
17.	Mathematical & Computational Sciences	Computational and Data Science	B.E./B.Tech. in any branch/4 year B.S./B.Sc. (Engineering/Research) with Mathematics as one of the subjects, or M.Sc. in (Mathematics/ Statistics/Physics/Computer science/IT/Information Science/Electronics or M.C.A.(Master of Computer Applications).
18.	Mechanical Engineering	Thermal Engineering	B.E. / B.Tech. / AMIE) in Mechanical Engineering / Automobile Engineering / Aeronautical Engineering / Aerospace Engg / Energy System Engg / Marine Technology / Power Plant Engg / Renewable Energy Engineering / Chemical Engg.
19.	Mechanical Engineering	Manufacturing Engineering	B.E. / B.Tech. / AMIE in Mechanical Engineering / Industrial Engineering / Industrial and Production Engineering / Industrial Engineering and Management / Manufacturing Engineering / Production Engg / tool Engineering
20.	Mechanical Engineering	Mechatronics Engg	<p>i) B.E / B. Tech. / AMIE in Mechanical Engineering</p> <p>ii) B.E / B. Tech. / AMIE in Electronics & Comm. Electrical & Electronics, Instrumentation. Control Engg / Electronics & Instrumentation Engineering</p> <p>iii) B.E / B. Tech. / AMIE in Mechatronics / Industrial Production / Production Engg / Manufacturing Engg / Industrial Engg / Aeronautical Engg, Automobile Engg,.</p>
21.	Mechanical Engineering	Mechanical Design	B.E / B. Tech. / AMIE in Mechanical Engineering, Automobile Engg, Manufacturing Engineering, Aeronautical Engineering/Aerospace Engineering, Production Engineering
22.	Metallurgical & Materials Engineering	Materials Process Technology	i) B.E. / B.Tech. / B.Sc.(Engineering) in Metallurgical Engineering / Industrial & Production Engg / Metallurgy / Metallurgical & Materials Engineering / Metallurgical Engg & Materials Science / Metallurgical & Materials Technology / Mechanical Engg / Chemical Engg / Production Engineering / Ceramics Engineering.

			<ul style="list-style-type: none"> ii) AMIE in Metallurgical Engineering / Mechanical Engineering (by Examination) iii) Associate Member of the Indian Institute of Metals (by examination) -A.M.I.I.M. iv) M.Sc. Chemistry (Physical / Analytical / Industrial / Applied Inorganic) v) M.Sc. (Materials Science) vi) Master Degree in Mineral Beneficiation / Mineral Processing / Ore Dressing.
23.	Metallurgical & Materials Engineering	Materials Engineering	<ul style="list-style-type: none"> i) B.E./B.Tech. /B.Sc. Engineering in Metallurgy / Mechanical Engineering / Chemical Engineering / Industrial Production / Polymer Technology / Ceramic & Cement Technology / Manufacturing Engineering / Industrial & Production Engg / Metallurgical & Materials Engineering / Metallurgical Engineering / Metallurgical Engg & Materials Science / Polymer Science & Technology / Polymer Science & Rubber Technology / Metallurgy & Materials Technology / Production Engineering. ii) AMIE in Mechanical / Metallurgical Engineering by exam. ii) AMIIM (by examination) of Indian Institute of Metals. iii) M.Sc. (Materials Science / Physics / Chemistry (Physical / Analytical / Industrial / Applied / Inorganic)
24.	Metallurgical & Materials Engineering	Nanotechnology	<ul style="list-style-type: none"> i) B.Tech. in Nanotechnology ii) M. Sc. In Physics, Chemistry, Materials Science, Bio-Technology. Nanoscience / Nanotechnology iii) B. Tech. / AMIE in Civil, Mechanical, E & E, E & C, Instrumentation, Chemical, Metallurgy, Mining Engineering, Metallurgical & Materials Engineering. iv) Associate member of the Indian Institute of Metals (by examination) – AMIIM.
25.	Mining Engineering	Rock Excavation Technology & Management	B.E./B.Tech./AMIE in Mining Engineering
26.	Water Resources and Ocean Engineering	Marine Structures	<ul style="list-style-type: none"> i) B.E. / B.Tech. in Civil Engineering / B. Sc (Civil Engg) / B.E / B.Tech Ocean Engineering ii) AMIE in Civil Engineering
27.	Water Resources and Ocean Engineering	Water Resources Engineering and Management	<ul style="list-style-type: none"> i) B.E. / B.Tech. in Civil Engg / B. Sc (Civil Engg) ii) B.E. Water Management iii) AMIE in Civil Engineering
28.	Water Resources and Ocean Engineering	Geo-informatics	<ul style="list-style-type: none"> i) B.E. / B. Tech. or B.Sc. (Engineering) in Civil Engineering iv) AMIE in Civil Engineering

2.3 Guidelines for M.B.A./M.C.A./ M.Sc. admissions

M.B.A, M.C.A and M.Sc. programmes are offered by the following departments.

- a) **School of Humanities, Social Sciences and Management:**
 - i) M.B.A. - Master of Business Administration
- b) **Mathematical and Computational Sciences:**
 - ii) M.C.A. - Master of Computer Applications
- c) **Chemistry:**
 - iii) M.Sc.(CY) - M.Sc. in Chemistry
- d) **Physics:**
 - iv) M.Sc.(PH) - M. Sc. in Physics

A. M.B.A. admissions

A.1 Non- scholarship seats (Full time)

- a) Full time student
- b) Full time self –financed

Admissions for Type (a) students will be made in accordance with the instructions received from MOE from time to time and is based on the CAT/MAT/GATE score and performance in the qualifying examination and interview.

Under Type (b), Full time self-financed type, allotment of seats is done based on the performance in the qualifying examination, along with a national level written test and a technical interview, both conducted in physical mode at NITK by the respective DPGC of concerned departments, with due weightage for each component as decided by the DPGC. [separate notification on admission of self-financed seats will be released on institute website at a later date.]

A.2 Minimum qualification/Eligibility

Admission to MBA Programme shall be open to Indian nationals who have passed the prescribed qualifying examination with a Cumulative Grade Point Average (CGPA) of at least 5.5 in the 0-10 scale grading system or not less than 50% marks in the aggregate (taking into account the marks scored in all subjects of all the university examination conducted during the entire prescribed period of the degree programme). However, this prescribed minimum shall be CGPA of at least 5.0 in the 0-10 scale grading system or 45% marks in aggregate for SC/ST/PwD candidates.

A.3 Qualifying Examinations for M.B.A.

Bachelor's Degree in any discipline from a Recognized University.

B. M.C.A. admissions

B.1 Non- scholarship seats (Full time)

- a) Full time student
- b) Full time self –financed student

Admissions for Type (a) student status will be made in accordance with the instructions received from MOE from time to time and is based on the performance in the prescribed Entrance Examination, (NIMCET) and performance in the qualifying examination and interview. NIMCET is the common entrance national level test, conducted by one of the NITs, for admission into their MCA programme.

Under Type (b), Full time self-financed type, allotment of seats is done based on the performance in the qualifying examination, along with a national level written test and a technical interview, both conducted in physical mode at NITK by the respective DPGC of concerned departments, with due weightage for each component as decided by the DPGC. [separate notification on admission of self-financed seats will be released on institute website at a later date.]

B.2 Minimum qualification/Eligibility

Admission to MCA Programme shall be open to Indian nationals who have passed the prescribed qualifying examination with a Cumulative Grade Point Average (CGPA) of at least 6.5 in the 0-10 scale grading system or not less than 60% marks in the aggregate (taking into account the marks scored in all subjects of all the University examination conducted during the entire prescribed period of the degree programme). However, this prescribed minimum shall be CGPA of at least 6.0 in the 0-10 scale grading system or 55% marks in aggregate for SC/ST/PwD candidates.

B.3 Qualifying Examinations for M.C.A.

Any UG program of minimum three years with mathematics/statistics as one of the subjects or B.E./B.Tech. from a recognized university/Institution.

C. M.Sc. (Physics and Chemistry) admissions

C.1 Non- scholarship seats (Full time)

- a) Full time student
- b) Full time self –financed student

Admissions for Type (a) students shall be made in compliance to the general guidelines received from MoE from time to time and is based on centralized counselling through CCMN. The candidates seeking admission to M.Sc. programme in Chemistry/Physics shall qualify JAM in Chemistry/Physics.

Under Type (b), Full time self-financed type, allotment of seats is done based on the performance in the qualifying examination, along with a national level written test and a technical interview, both conducted in physical mode at NITK by the respective DPGC of concerned departments, with due weightage for each component as decided by the DPGC. [separate notification on admission of self-financed seats will be released on institute website at a later date].

C.2 Minimum qualification/Eligibility

Admission to a MSc Programme shall be open to Indian nationals who have passed the prescribed qualifying examination with a Cumulative Grade Point Average (CGPA) of at least 6.5 in the 0-10 scale grading system or not less than 60% marks in the aggregate taking into account the marks scored in all subjects of all the University examination conducted during the entire prescribed period of the degree programme. However, this prescribed minimum marks shall be 55% (CGPA of at least 6.0 in the 0-10 scale grading system) in the case of SC/ST.

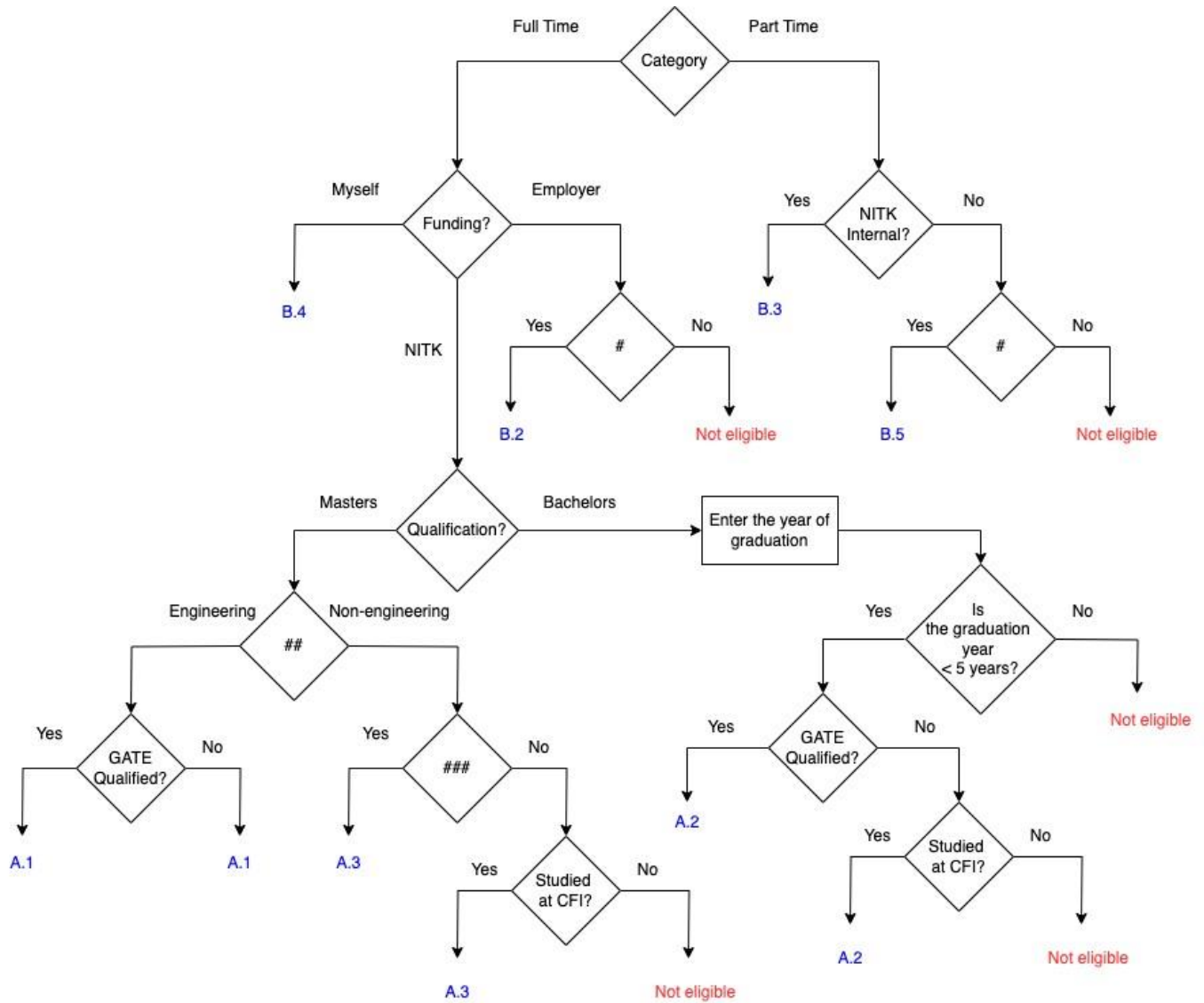
C.3 Qualifying Examinations for M.Sc.

M.Sc. Chemistry-Bachelor's degree with Chemistry as one of the subjects/B.E./B.Tech from a Recognized University.

M.Sc. Physics- Bachelor's degree with Physics as one of the subjects/B.E./B.Tech from a Recognized University.

3. Ph.D. Admissions

3.1 Flow chart for Ph.D. Admissions



Are you a regular employee with your current firm/institute for at least past 2 years?
 ## Do you have Masters in an engineering degree (M.E./M.Tech) or a non-engineering degree (M.Sc /M. A/MCA/MBA)?
 ### Are you GATE/UGC-NET/CSIR /NBHM/DAE-JEST qualified?

3.2 Guidelines for Ph.D. Admissions

A. Scholarship seats

- A.1 Candidates with M.E /M. Tech. or equivalent degree with/without GATE
- A.2 Candidates with B.E /B. Tech. or equivalent degree with/without GATE
- A.3 Candidates with M.Sc /M. A/M.C.A./M.B.A. or Master's degree in any relevant discipline with/without GATE/UGC-NET/CSIR /NBHM/DAE-JEST.

B. Non-Scholarship seats

- B.1 QIP seats (Full time)
- B.2 Full time - Sponsored seats from Industry, Educational Institution or other organizations
- B.3 Internal Registrants- sponsored Institute or Project staff of NITK (part time)
- B.4 Full time Non –sponsored/non-scholarship
- B.5 External registrants - Sponsored seats from Industry, Educational Institution or other organizations (part time)

For all Ph.D admissions under all categories (scholarship and non-scholarship), candidate should qualify the national level written test and a technical interview, both conducted by the respective DRPC of the concerned departments in physical mode at NITK.

For scholarship seats under **A.1**, candidates with M.E/M.Tech or Equivalent degree as the qualifying degree are eligible with/without GATE score.

Scholarship seats under **A.2**, are direct admission for candidates with B.Tech/B.E/B.Arch/B.plan/B.Des/B.S (Four year degree program) in relevant discipline within five years of obtaining the qualifying undergraduate degree. Such candidates must possess a qualifying GATE score. However, the candidates who have obtained their undergraduate degree from a centrally funded Institute are exempted from the mandatory requirement of a qualifying GATE score.

For scholarship seats under **A.3**, candidates with M.Sc./MA/MBA/MCA/Master's degree in any other relevant discipline must possess a qualifying GATE score/UGC-NET/CSIR /NBHM/DAE-JEST. However, the candidates who have obtained their M.Sc./MA/MBA/MCA/Master's degree in any other relevant discipline from a centrally funded Institute are exempted from the mandatory requirement of a qualifying GATE score/UGC-NET/CSIR/ NBHM/DAE-JEST.

Under non-scholarship seat, students of type **B.1** are admitted under quality improvement program (QIP), being implemented and monitored by All India Council for Technical Education. Under "QIP", only sponsored teachers who are permanent faculty members of AICTE recognized degree/diploma level colleges are eligible to apply.

Under non-scholarship seat, students of type **B.2** are sponsored and financed by the sponsoring organization. The candidate must have minimum of 2 years of full-time work experience in the sponsoring organization. Candidate should produce a sponsorship-cum-clearance certificate in the format provided by NITK, along with the application.

Student of the type **B.3** are internal registrants who are sponsored institute or project staff of NITK and are required to produce a sponsorship-cum-clearance certificate from the Director, NITK.

Under non-scholarship seats, **B.4** are full time Non –sponsored type of students. The number of admissions under this shall be restricted to the number of vacant seats in type A, against the sanctioned intake.

Under non-scholarship seat, students of type **B.5** are external registrants, sponsored by industry/Educational Institution. The candidate must have minimum of 2 years of full-time work experience in the sponsoring organization/Institution. Candidate should produce a sponsorship-cum-clearance certificate in the format provided by NITK, along with the application. Candidates are expected to carry-out their research work in their parent organization after fulfilling certain prerequisites in the Institute and may have an additional Research Guide from the sponsoring organization. Residential requirement may be waived for such candidates and they are expected to complete their course work by opting for (pre-approved by DRPC) certified courses.

C. Minimum qualification/Eligibility for PhD Admissions

- i) Admission to Ph.D. Programme shall be open to Indian Nationals with M.E./M.Tech. or equivalent degree with a Cumulative Grade Point Average (CGPA) of at least 6.0 in the 0-10 scale grading system, or not less than 60% marks in the aggregate (taking into account the marks scored in all the subjects of all the public/ university examinations conducted during the entire prescribed period for the qualifying degree) or a CGPA of 5.5 or 55% marks in the aggregate for SC / ST / PwD candidates.
- ii) **Direct admission** to Ph.D. Programme shall be open to Indian Nationals with B.Tech/B.E/B.Arch/B.plan/B.Des/B.S (Four year degree program) in relevant discipline within five years of obtaining the qualifying undergraduate degree. Such candidates should have a qualifying GATE score and a Cumulative Grade Point Average (CGPA) of at least 8.0 in the 0-10 scale grading system, or not less than 80% marks in the aggregate or a CGPA of 7.5 or 75% marks in the aggregate for SC / ST / PwD candidates (taking into account the marks scored in all the subjects of all the public/ university examinations conducted during the entire prescribed period for the qualifying degree). However, candidates who have obtained the above mentioned undergraduate degree from a **centrally funded Institute** with a Cumulative Grade Point Average (CGPA) of at least 8.0 in the 0-10 scale grading system or not less than 80% marks in the aggregate, or a CGPA of 7.5 or 75% marks in the aggregate for SC / ST / PwD candidates, are exempted from the mandatory requirement of a qualifying gate score.
- iii) Admission to Ph.D. Programme shall be open to Indian Nationals with M.Sc/MA/MBA/MCA or master's degree in any other relevant discipline with a Cumulative Grade Point Average (CGPA) of at least 6.0 in the 0-10 scale grading system, or not less than 60% marks in the aggregate (taking into account the marks scored in all the subjects of all the public/ university examinations conducted during the entire prescribed period for the qualifying degree) or a CGPA of 5.5 or 55% marks in the aggregate for SC / ST / PwD candidates. In addition, the candidate must have a qualifying GATE /UGC-NET/CSIR/NBHM/DAE-JEST. However, Candidates who have obtained the above mentioned master's degree from a **centrally funded Institute** with a Cumulative Grade Point Average (CGPA) of at least 8.0 in the 0-10 scale grading system or not less than 80% marks in the aggregate or a CGPA of 7.5 or 75% marks in the aggregate for SC /ST / PwD candidates (taking into account the marks scored in all the subjects of all the public/ university examinations conducted during the entire prescribed period for the qualifying degree), are exempted from the mandatory requirement of a qualifying GATE /UGC-NET/CSIR /NBHM/DAE-JEST.

D. Specializations in Ph.D. Programme

Sl. No	Department	Specialization
1	Chemical Engineering	Process Development, Particulate Systems, Environmental Engineering, Transfer Operations, Industrial Biotechnology, Energy, Process Modelling and Simulation, Computational Fluid Dynamics, Nanosciences / Nanotechnology, Polymer nanocomposites, Process dynamics and control, and Molecular Simulations.
2	Civil Engineering	Structural Engineering, Geotechnical Engineering, Transportation Engineering, Construction Technology and Management, Environmental Engineering and Earth Sciences.
3	Computer Science and Engineering	Networks, Software Engineering, Distributed Computing, Data Mining, Information Security, High Performance Computing, Computer Vision, Cloud Computing, Image Processing, Speech Processing, Mobile computing, Cloud system, Internet of Things (IoT), Blockchain Applications, Computer Architecture, Machine Learning and Artificial Intelligence, Networks-on-Chip, Formal Verification, Cyber- Physical Systems, Data Science, Precision agriculture and farming, Social Computing, Graph Theory, Big Data analytics, Network Function Virtualization, Information Centric Networking, 5G Core, Underwater Communication, Cryptography, Deterministic Networking, Industrial IoT, Quantum Computing, Neuromorphic Computing, Candidates with M.Sc/MCA/MBA degree etc. will not be considered and candidate with 1 year PG degree (M.S / M.Tech.) will also be not considered.
4	Electrical and Electronics Engineering	Power and Energy Systems/ Power Electronics and Electric Drives/ Control Systems/ New and Renewable Energy Systems/ Insulation and High Voltage Engineering/ Application of Signal Processing, Artificial Intelligence (AI)/Machine Learning (ML) Algorithms in Electrical Engineering.
5	Electronics & Communication Engineering	Digital, analog and mixed signal design, Advanced computer architectures, Semiconductor devices and modeling, Nano-photonic devices and sensors, 2-D Materials and devices, Digital signal and image processing, Computer Vision, Machine learning, Deep learning and applications, Biomedical signal and image processing, Medical imaging, Medical-clinical-pathological data informatics and decision support systems, radiology and microscopic image processing, Remote sensed image analysis and DIS applications, Photogrammetry, Speech-audio-music video-multimedia information processing. Design synthesis and performance verification of channel codes for flash memory devices, magnetic storage devices, IPV6 protocol, deep space communications and underwater optical communications, RF and microwave engineering, Antenna systems, Artificial electromagnetic surfaces, Millimeter wave and THz circuits and components, Radar signal processing, 5G networks.
6	Information Technology *	Affective Computing, Artificial Intelligence, Big Data Analytics, Bioinformatics, Biomedical Imaging, Blockchain Technologies, Cloud/Edge/Fog Computing, Cloud Security, Computer Networks, Cryptography, Computer vision, Cyber Security, Databases, Data Mining, Deep Learning Applications, Distributed Computing, Evolutionary Deep Intelligence, Future Internet Architecture, Healthcare Informatics, High Performance Computing,

		<p>Information Retrieval, Information Security, Internet of Things, Mobile Software Engineering, Natural Language Processing, Network Security, Quantum Computing, Quantum Cryptography, Scientific Imaging, Semantic Web Technology, Security Analytics, Social Multimedia/Social Network Analysis, , Software Engineering, Spatial Data Analysis, Web Services, Wireless networks, 5G and Beyond.</p> <p>Candidates with M.Sc/MCA/MBA degree etc. will not be considered and candidate with 1 year PG degree (M.S / M.Tech.) will also be not considered.</p>
7	Mathematical and Computational Sciences	<p>Scientific Computing, Cryptography, Fuzzy Set Theory, Computer Network Security, Cyber Security, Graph Algorithms, Image Processing, Cloud Computing, Quantum Computing, Artificial Intelligence, Machine Learning, Deep Learning, Generative AI, Computer Vision, Wireless Sensor Networks, Block Chain Technology, Internet of Things, Medical Imaging.</p> <p>Fluid Dynamics, Graph Theory, Algebra, Real Analysis, Numerical Linear Algebra, Functional Analysis, Number Theory, Dynamical Systems, Differential Equations, Numerical Analysis, Statistical Inference, Reliability Theory, Cryptography.</p>
8	Mechanical Engineering	<p>Renewable Energy, Alternative Fuels, Biofuels and Biorefining, IC Engine & Combustion, Refrigeration and Air-conditioning, Heat Transfer and Bio Heat Transfer, Fluid Dynamics and Micro and Bio fluidics, Fluid Structure Interaction, Fracture Mechanics and Fatigue, FEM, Stress Analysis, Tribology, Machine Dynamics and Vibration, Advanced Materials, Biomaterials and Biomechanics, Advanced Manufacturing, Mechatronics, MEMS, Nanotechnology, Robotics and Control, Product Design, Systems and Bio systems Engineering, Structural Acoustics, Polymer Nano-Composites, Precision Manufacturing.</p>
9	Metallurgical & Materials Engineering	<p>Physical Metallurgy, Mechanical Metallurgy, Extractive Metallurgy, Beneficiation of Minerals, Welding, Surface Engineering, Corrosion, Polymer Nanocomposites, Ceramic and Polymeric Nanofabrics, Energy conversion and storage, Thin films & coatings, Advanced Materials, Heat transfer studies.</p> <p>M.Sc. in Materials Science / Dental Materials / Nanoscience / Physics / Chemistry / Electrochemistry / Applied Chemistry / Industrial Chemistry / Polymer Chemistry / Biochemistry/ Microbiology.</p> <p>B.Tech./M.E./M.Tech. in Metallurgical Engineering / Metallurgical and Materials Engineering / Materials Engineering / Mechanical Engineering / Chemical Engineering / Industrial and Production Engineering / Nanotechnology/Materials Process Technology.</p>
10	Mining Engineering	<p>Rock Mechanics & Ground Control Engineering, Drilling & Blasting, Mine Planning, Environmental Management, Slope Stability, Design and Stability of Civil Excavations, Waste Management, Mineral Beneficiation. Computer Applications in Mining, Mine Health & Safety Engineering</p>
11	Water Resources and OceanEngineering	<p>Water Resources Engg & Management; Surface Water Hydrology, Ground Water Hydrology, Hydrological modelling,, Artificial Intelligence in water resources, Urban Hydrology, Urban water management, Sediment Transport, Ocean and Coastal Engineering, Offshore Renewable Energy, Computational Hydrodynamics, Structural Dynamics, Offshore Engineering, Marine Structures, Isotropic Elasticity in Marine Structure Analysis, Finite Element Analysis of marine and hydraulic structures, Soft computing Applications in Civil Engineering , Geo-informatics Applications in Civil Engineering: Hyperspectral Remote Sensing, Microwave Remote Sensing , Disaster</p>

		management using advance surveying , GIS and UAV.
12	Physics	High energy theory, Quantum gravity, Quantum field theory and gravity, Optoelectronics, Condensed Matter- Theory and Experiment, Cosmology and High Energy Physics, Nonlinear Dynamics, and Material Science
13	Chemistry	Inorganic, Materials, Organic and Physical Chemistry M.Sc. / M. Tech in relevant field including M. Pharma
14	School of Humanities, Social Sciences and Management	Strategic Management, International Business, Technology Management, Organizational Behaviour, Human Resource Management, Marketing, Corporate Finance, Capital Markets, Behavioural Finance, Development Economics, International Economics, Agricultural Economics, Rural Development, Applied Econometrics, Operations Management, Information Systems, E-Governance, English and Comparative Literature, and Other related areas. * M.Phil degree will not be considered.

E. Qualifying Examinations for Ph.D.

The prescribed qualifying examination for Ph.D. in Engineering /Technology is Master's degree in relevant field.

Under direct admission to Ph.D., the prescribed qualifying examination is B.Tech/B.E/B.Arch/B.plan/B.Des/B.S (Four year degree program) in relevant discipline within five years of obtaining the qualifying undergraduate degree.

For Ph.D. in Physics – Master's degree in relevant field.

For Ph.D. in Chemistry - M.Sc. / M. Tech in relevant field including M. Pharma.

For Ph.D. in Department of Mathematical and Computational Sciences - MS / M.Sc in Mathematics / Statistics / Physics / CS / IT /Electronics / Information Science / AI / ML / Data Science or M.Tech / ME in CS / IT / Electronics / Information Science / AI /ML / Data Science or MCA

For Ph.D. in Humanities, Social Science and Management – Master degree in relevant field, CA along with undergraduate degree.

4. Selection Procedure

A. M. Tech.:

- i. **Common Admission for M.Tech. Full time Program (for scholarship seats)** will be done through CCMT-2024. The seats are allotted based on GATE score. The details of seat matrix, application procedure etc will be available at ccmt.nic.in.
 - ii. The admission for **M.Tech. (Sponsored Seats) and M.Tech. (Research)** are done by NITK Surathkal. Selection of candidates for admission will be based upon academic performance in qualifying examination or / and written test or / and technical interview, etc., as decided by the DPGC of the concerned Department offering the programme. Under sponsored category, the candidates must have minimum of two years of full- time work experience in the sponsoring organization.
 - iii. **A separate notification for admission to self-financed seats in M.Tech., M.B.A, M.C.A, M.Sc. programmes will be released on institute website at a later date. Allotment of seats is done based on the performance in the qualifying examination, along with a national level test and a technical interview, both conducted in physical mode at NITK by the respective DPGC of concerned departments, with due weightage for each component as decided by the DPGC.**
- B. M.Tech. (Research):** Selection of candidates for admission will be based upon academic performance in qualifying examination or / and written test or / and technical interview, etc., as decided by the DPGC of the concerned Department offering the programme. Candidates with a valid GATE score is entitled to receive the Institute scholarship.
- C. M.B.A.:** Selection of eligible candidates for regular admission to MBA programme will be based upon the CAT/MAT/GATE score with 70% weightage, group discussion 10%, personal Interview 10% and a work Experience 10% weightage in the overall evaluation process.
- D. M.C.A.:** Selection of eligible candidates for regular admission to MCA programme will be based upon the rank obtained in NIMCET only. The NIMCET is a common entrance national level test, conducted by any of the NITs, for admission in to their MCA programme.
- E. M.Sc.:** Regular admissions for MSc in Physics and Chemistry are based JAM score in Physics and Chemistry respectively. Allotment of seats is done centrally through CCMN.
- F. Ph.D.:** Selection of eligible candidates for admission to Ph.D. programme will be based upon the written test with 40% weightage and a technical interview with 60% weightage in the overall evaluation process. Research publications and experience (research/teaching/industry) with 5% weightage each, are part of interview component. Other interview components are technical presentation to assess the research aptitude of the candidate with 10% weightage and technical interview to assess the subject knowledge with 40% weightage. Written test and technical interview will be conducted by the respective DRPC of the concerned departments in physical mode at NITK.

5. How to Apply:

The Information Bulletin, Seat Matrix and Online Application portal for admission to MTech. (Sponsored/Research) is available on the Institute website www.nitk.ac.in. The applicants need to register online with the portal. The registered candidates have to complete Online Application form and pay prescribed application fee, i.e. **Rs 500 (OC / OBC/EWS) and Rs150 (SC / ST / PwD)** through IRIS portal on or before **19-04-2024**, 23.59 hours. **(Friday)**. **A separate notification for admission to M.Tech (self-financed) program will be released on institute website at a later date.**

The hardcopy of the completed application form with payment receipts and copies of all necessary documents is to be sent to the Assistant Registrar (Academic), National Institute of Technology Karnataka, Surathkal, Srinivasnagar, Mangalore -575 025, Karnataka to reach on or before 24-04-2024 (Wednesday), 17.00 hours. "Application for M.Tech Admission in the Department of _____" should be clearly mentioned on the top of the envelop.

The Information Bulletin, Seat Matrix and Online Application portal for admission to Ph.D. programmes is available on the Institute website www.nitk.ac.in. The applicants need to register online with the portal. The registered candidates have to complete Online Application form and pay prescribed application fee, i.e. **Rs 500 (OC / OBC/EWS) and Rs150 (SC / ST / PwD)** through IRIS portal on or before **26-04-2024 (Friday)**, 23.59 hours.

The hardcopy of the completed application form with payment receipts and copies of all necessary documents is to be sent to the Assistant Registrar (Academic), National Institute of Technology Karnataka, Surathkal, Srinivasnagar, Mangalore -575 025, Karnataka to reach on or before 30-04-2024 (Tuesday), 17.00 hours. "Application for Ph.D Admission in the Department of _____" should be clearly mentioned on the top of the envelop.

Candidates sponsored by the Educational Institutions/Industries must get their applications forwarded through proper channel.

Applications which are incomplete / defective / received late are liable to be rejected summarily and no correspondence will be entertained on such applications.

Note: If a candidate desires to apply to more than one course [M. Tech (Self-financed/Sponsored / Research) / Department (Ph.D.)] he / she should submit separate APPLICATION along with Payment Receipt of Application fee for each program. Candidates called for interview will have to appear for written test and / or interview at their own cost. The written test and / or interview will be held at N.I.T.K., Surathkal on **offline mode.**

6. Calendar of Events for Admission to M.Tech (Sponsored/Research) and Ph.D. Programmes 2024-25.

[A separate notification for admission to self-financed seats in M.Tech., M.B.A, M.C.A, M.Sc. programmes will be released on institute website at a later date.]

Particulars	M.Tech.	Ph.D. programme
Last Date for Online Submission of applications	19-04-2024 (Friday), 23.59 hours.	26-04-2024 (Friday), 23.59 hours.
Last Date for hard copy of applications to reach NITK	24-04-2024 (Wednesday), 17.00 hours.	30-04-2024 (Tuesday), 17 hours
Last date for dispatch of call letters (by email only) to short-listed candidates, and announcement in the website by respective departments.	03-05-2024 (Friday)	10-05-2024 (Friday)
Selection Test and / or Interview (Offline)	15-05-2024 (Wednesday) to 17-05-2024 (Friday)	20-05-2024 (Monday) to 22-05-2024 (Wednesday)
Last date for sending recommendations merit list by Departments to the Dean (Academic)	20-05-2024 (Monday)	24-05-2024 (Friday)
Publication of provisional selection/merit-list on website by Dean (Academic)	24-05-2024 (Friday)	29-05-2024 (Wednesday)
Online fee Payment Dates for Selected Candidates	27-05-2024 (Monday) to 5-06-2024 (Wednesday)	30-05-2024 (Thursday) to 10-06-2024 (Monday)
Last Date for sending admission offer letters to waiting-list candidates	To be announced later	To be announced later
Last Date for physical Reporting and Fee Payment, for waiting-list candidates	To be announced later	To be announced later
Class start dates	To be announced later	To be announced later

7. Intake for M.Tech. , M.Tech. (Research) and Ph.D. Programmes:

A. Intake for M. Tech, M.B.A, M.C.A, M.Sc., (Sponsored) Programme for 2024-25

Serial No.	Department	M.Tech Program	Sponsored
1.	Department of Mathematical & Computational Sciences-(MC)	Computational and Data Science-(CD)	1
2.	Department of Chemical Engineering-(CH)	Chemical Engineering-(CE)	1
3.	Department of Civil Engineering-(CE)	Construction Technology and Management-(CM)	1
4.	Department of Electronics & Communication Engineering-(EC)	Communication Engineering and Networks-(CX)	1
5.	Department of Chemical Engineering-(CH)	Environmental Science & Technology-(EH)	1
6.	Department of Civil Engineering-(CE)	Environmental Engineering-(EV)	1
7.	Department of Civil Engineering-(CE)	Geotechnical Engineering-(GE)	1
8.	Department of Chemical Engineering-(CH)	Industrial Biotechnology-(IB)	1
9.	Department of Information Technology-(IT)	Information Technology-(IT)	1
10.	Department of Mechanical Engineering-(ME)	Mechatronics Engineering-(M3)	1
11.	Department of Mechanical Engineering-(ME)	Mechanical Design-(M4)	1
12.	Department of Metallurgical & Materials Engineering-(MT)	Materials Engineering-(ML)	1
13.	Water Resources and Ocean Engineering (WOE)	Marine Structures-(MR)	1
14.	Department of Mechanical Engineering-(ME)	Manufacturing Engineering-(MU)	1
15.	Department of Metallurgical & Materials Engineering-(MT)	Nanotechnology-(NT)	1

16.	Department of Metallurgical & Materials Engineering-(MT)	Materials Process Technology - (PM)	1
17.	Department of Electrical & Electronics Engineering-(ET)	Power & Energy Systems-(PX)	1
18.	Water Resources and Ocean Engineering (WOE)	Geoinformatics (GF)	1
19.	Department of Electronics & Communication Engineering-(EC)	Signal Processing and Machine Learning-(SB)	1
20.	Department of Civil Engineering-(CE)	Structural Engineering-(SU)	1
21.	Department of Civil Engineering-(CE)	Transportation Engineering-(TE)	1
22.	Department of Mechanical Engineering-(ME)	Thermal Engineering-(TI)	1
23.	Department of Electronics & Communication Engineering-(EC)	VLSI Design-(VN)	1
24.	Water Resources and Ocean Engineering (WOE)	Water Resources Engineering & Management-(WM)	1
25.	Department of Computer Science & Engineering- (CT)	Computer Science & Engineering (Information Security)-(XF)	1
26.	Department of Computer Science & Engineering- (CT)	Computer Science & Engineering-(XG)	1
		Total	26

B. Intake for M. Tech. (Research) for 2024-25

Category	OC	OC-PWD	EWS	EWS-PWD	OBC	OBC-NCL PWD	SC	SC-PWD	ST	ST- PWD	Total
No. of Seats	25	1	6	0	16	1	9	0	5	0	63

C. Intake for M.B.A. for 2024-25

Category	OC	OC-PWD	EWS	EWS-PWD	OBC	OBC-NCL PWD	SC	SC-PWD	ST	ST- PWD	Total
No. of Seats	30	2	8	0	21	1	11	1	6	0	80

D. Intake for M.C.A. for 2024-25

Category	OC	OC-PWD	EWS	EWS-PWD	OBC	OBC-NCL PWD	SC	SC-PWD	ST	ST-PWD	Total
No. of Seats	22	1	6	0	15	1	9	0	4	0	58

E. Intake for M.Sc.(Chemistry) for 2024-25

Category	OC	OC-PWD	EWS	EWS-PWD	OBC	OBC-NCL PWD	SC	SC-PWD	ST	ST-PWD	Total
No. of Seats	12	1	3	0	9	0	5	0	3	0	33

F. Intake for M.Sc.(Physics) for 2024-25

Category	OC	OC-PWD	EWS	EWS-PWD	OBC	OBC-NCL PWD	SC	SC-PWD	ST	ST-PWD	Total
No. of Seats	12	1	4	0	8	1	5	0	2	0	33

G. Intake for Ph.D. Programme for 2024-25: Full time under Institute Scholarship

Category	OC	EWS	OBC-NCL	SC	ST	Persons with disability (PWD)					Total
						OC	EWS	OBC-NCL	SC	ST	
Intake	72	18	49	27	13	4	1	2	1	1	188

H. Intake for M. Tech., M.B.A., M.C.A., M.Sc., (Self-financed) for 2024-25

Programme	Department	Specialization	No of Seats
M.Tech	Civil Engineering	Structural Engineering	5
	Civil Engineering	Geotechnical Engineering	5
	Civil Engineering	Environmental Engineering	5
	Civil Engineering	Transportation Engineering	5
	Water Resources and Ocean Engineering	Marine Structures	5
	Water Resources and Ocean Engineering	Water Resources Engineering and Management	5
	Water Resources and Ocean Engineering	Geoinformatics	5
	Mechanical Engineering	Thermal Engineering	10
	Mechanical Engineering	Manufacturing Engineering	10
	Mechanical Engineering	Mechatronics Engineering	5
	Mechanical Engineering	Mechanical Design	10
	Electronics & Communication Engineering	VLSI Design	8
	Electronics & Communication Engineering	Communication Engineering and Networks	8
	Electronics & Communication Engineering	Signal Processing and Machine Learning	8
	Chemical Engineering	Chemical Engineering	5
	Chemical Engineering	Environmental Science & Technology	5
	Chemical Engineering	Industrial Biotechnology	5
	Metallurgical & Materials Engineering	Process Metallurgy	5
	Metallurgical & Materials Engineering	Materials Engineering	5
	Metallurgical & Materials Engineering	Nanotechnology	5
Electrical & Electronics Engineering	Power and Energy Systems	10	
Electrical & Electronics Engineering	Power Electronics and control	10	
Information Technology	Information Technology	5	
Computer Science and Engineering	Computer Science & Engineering	5	
Computer Science and Engineering	Computer Science & Engineering - Information Security	5	
Mathematical & Computational Sciences	Computational and Data Science	5	
MCA	Mathematical & Computational Sciences		10

MSc	Physics	7
MSc	Chemistry	5
MBA	School of Management	10
	Total	186

OC - Open Category / GM EWS - Economically Weaker Section OBC - Other Backward Caste SC- Scheduled Caste ST- Scheduled Tribe

Note: Foreign Nationals are admitted to Ph.D. program under the ICCR Scheme.

Note:

- a. Reservation for SC / ST / Persons with Disabilities (PWD) is as per Central Government rules.
- b. Reservation of seats for OBC /EWS is as per GOI / MHRD norms.
- c. The above intake is excluding QIP seats allotted by AICTE / MHRD and seats earmarked for Indian Navy.

8. Documents to be produced

A. At the time of counselling/written test/interview

1. Original marks card of all Semesters/years of Masters /Bachelor's degree
2. Date of Birth Certificate in Original (SSLC / X Std.)
3. Degree Certificate or Course Completion certificate from college (if qualifying degree exam results are awaiting)
4. Caste Certificate if belonging to SC / ST (original)
5. EWS Category Certificate as per prescribed format issued by the Competent Authority on or after 1-4-2024.
6. OBC certificate as per prescribed format for OBC candidates. (if applicable) from the Competent Authority issued on or after 1-4-2024.
7. GATE / NET Score Card (if applicable)
8. Sponsorship Certificate, if applicable in the prescribed format
9. No objection certificate, if applicable in the prescribed format
10. Pass certificate for A.M.I.E. candidates (M Tech.)
11. Persons with Disabilities (PWD) certificate, if applicable.

B. Documents to be submitted at the time of admission

1. Admission order issued by Competent Authority.
2. Original marks card of qualifying examinations (First to Final Year) with two sets of duplicate copies. (The spelling and order of the name should be same in all the years of marks card, degree certificate and Migration Certificate).
3. Course Completion certificate from college (if qualifying degree exam results are awaiting)
4. Original GATE / NET Score Card (if applicable).
5. Degree Certificate or Provisional Pass Certificate issued by the University.
6. Sponsorship Certificate (if sponsored) in the prescribed format.
7. No objection certificate, if applicable in the prescribed format
8. Medical Certificate (general fitness).
9. Relieving Certificate in the case of Sponsored Candidates.
10. Date of Birth Certificate in original (X Std. or SSLC).
11. Caste Certificate in case of SC / ST.
12. OBC Certificate (if applicable) from the competent authority issued on or after 1-4-2024.
13. EWS Category Certificate issued by the Competent Authority on or after 1-4-2024.
14. Transfer Certificate.
15. Conduct Certificate.
16. Aadhar card copy.

17. Persons with Disabilities (PWD) certificate, if applicable.

18. Migration Certificate other than Karnataka students

Note:

- OBC candidates have to furnish the OBC certificate as per prescribed format. **Candidate can download the prescribed format for OBC Certificate from the NITK website (i.e. www.nitk.ac.in)**
- EWS candidates have to furnish the EWS certificate as per prescribed format. **Candidate can download the prescribed format for EWS Certificate from the NITK website (i.e. www.nitk.ac.in)**
- Sponsored candidates / External registrants should produce a sponsorship certificate / No Objection Certificate in the given format of the Institute.
- Internal Registrants shall produce a No objection certificate from the Director, NITK.

In case the result of qualifying degree is awaited, provisional admission will be given subject to meeting eligibility requirements latest by 30th September 2024.

9. Financial Assistance:

A. M. Tech. / M. Tech. (Research) Programs – GATE Scholarship

A candidate will become eligible for GATE scholarship in M.Tech. / M.Tech. (Research) programme on possessing a valid GATE score. Only Indian Nationals are eligible for this scholarship.

A student is eligible to receive GATE scholarship at the rate Rs.12,400/- per month if he / she accepts the following conditions:

- i) It will be obligatory for every post graduate student to undertake 8 to 10 hours (per week) of work related to teaching and research activities as assigned to him / her by the Institute. This could include tutorials, laboratory classes, development and maintenance of laboratories, assistance in research and development activities undertaken by faculty members, maintenance and operation of computers and other central facilities.

Student should have registered and passed in all courses listed in the suggested plan for study for I semester and secured a SGPA not less than 6.0 at the end of I semester in order to be eligible for the continuation of full GATE stipend. However, students who have passed in all courses with SGPA less than 6.0 at the end of I semester will be awarded 50% of the entitled stipend for II semester and the full GATE stipend will be restored if the candidate secures a CGPA of 6.0 at the end of II semester. Students who have passed in all courses with CGPA less than 6.0 at the end of II semester will be awarded 50% of the entitled stipend for the remaining duration of study. In case of M Tech (Research), a student at any stage should have passed in all the registered courses with a SGPA/ CGPA not less than 6.0 in order to be eligible for the continuation of GATE stipend.

- ii) A student shall be required to give an undertaking to the effect that he/she would not leave the course midway or appear in any competitive examinations, etc, not related to engineering or technology, in order to be eligible to receive this scholarship.

A student receiving the scholarship shall not receive any other emoluments like salary, stipend from any other sources. In no case will the scholarship be allowed for more than 24 months.

Scholarship meant for SC/ST candidates will not be granted to the students under OC / OBC category.

The scholarship holders are governed by the leave rules as prescribed from time to time. If an awardee remains absent for the class / programmes without proper sanction of leave, he/she will be liable to forfeit the scholarship. Leave is sanctioned subject to the conditions stipulated in the leave rules of the Institute

B. Ph.D. Programme

- a) Full time research scholars of type A.1, A.2 and A.3 are eligible for a fellowship of Rs. 37,000/- pm for the first two years and Rs. 42,000/-pm for the remaining two years on satisfactory progress if they qualify in the national level written test and a technical interview, both conducted by the respective DRPC of the concerned departments in physical mode at NITK, Surathkal. Pursuant to the directives of MHRD Government of India, the revision in PhD scholarship will be effected. The Research scholars have to assist in teaching and laboratory work assigned by the department and are eligible for 30 days' vacation leave per year.
- b) Full-time QIP candidates of type B.1, are sponsored teachers who are permanent faculty members of AICTE recognized degree level colleges admitted under QIP scheme.

- c) Full-time sponsored candidates of type B.2 may receive complete financial support including stipend, contingency grants and project expenses from the sponsoring organizations.
- d) Internal Registrants of type B.3, (Institute Faculty / Staff, Project staff) are expected to work for their Ph.D. Programme while fulfilling their normal duties.
- e) B.4 are full time non –sponsored type of students and are not entitled for Institute scholarship. The number of admissions under this shall be restricted to the number of vacant seats in type A, against the sanctioned intake.
- f) Part time students sponsored from Industry/Educational Institutes of type B.5 are expected to carry out their Research work in their parent organization after fulfilling certain pre-requisites in the Institute. They are not entitled for Institute scholarship. The external candidate shall produce a sponsorship and clearance certificate from his employer and submit it along with the application.

C.Sponsored Candidates

- i) The candidates must have a minimum two years of full-time work experience, in the sponsoring organization.
- ii) Candidate should produce a sponsorship-cum-clearance certificate in the format provided by NITK, along with the application.

10. Fees and Deposits

A. Fee structure for M. Tech. & M. Tech. (Research) programme for the year 2024-25

Semester Fees	First Year	
	I Sem.Rs.	II Sem.Rs.
Tuition fee	35000	35000
Other fee (PART A) #		
Institute Admission Fee	1278	-
Development Fee	2558	2558
Security Deposit (refundable)	6384	-
NITK Alma Mater Endowment Contribution	2558	-
Convocation Fee	3150	-
Other fee (PART B)##		
Library Resources Fee	3837	3837
Career Development Fee	2625	-
Health Care Facility	1575	-
Students Activities Fee	6300	-
Campus Amenities	1575	-
Group Insurance coverage of students	800	-
Computing Resource Fee	4200	-
Day Scholar Total Fees	71840	41395
Hostel Rent (For Hosteller)	8400	8400
Hostel Rent (including water/electricity charges) Boys / Girls (Shared accommodation)		
Hosteller Total Fees	80240	49795

Students belonging to SC/ST/PwD category are exempted from payment of Tuition fee (Exemption is not applicable to QIP, DASA, ICCR and MEA and External Registrants and Internal Registrants for PG& R programme).

B. Fee Structure for M.Tech. Internal registrants (Part Time) who are Regular (Permanent) staff of the institute for the year 2024-25

Tuition fee	Rs. 7500/- Per year
Institute Development Contribution	Rs. 10000/- 1 st year
Alumni Association	Rs. 1000 /- (one-time payment at the time admission)
Convocation Fee	Rs. 2000/- (I st Sem Rs.1000/- & II nd Sem Rs. 1000/-)

C. Fee structure for M.B.A. Programme (Regular admission) 2024-25

<u>Semester Fees</u>	First Year	
	I Sem.Rs.	II Sem.Rs.
Tuition fee	100000	100000
Other fee (PART A) #		
Institute Admission Fee	1278	-
Development Fee	2558	2558
Security Deposit (refundable)	6384	-
NITK Alma Mater Endowment Contribution	2558	-
Convocation Fee	3150	-
Other fee (PART B)##		
Library Resources Fee	3837	3837
Career Development Fee	2625	-
Health Care Facility	1575	-
Students Activities Fee	6300	-
Campus Amenities	1575	-
Group Insurance coverage of students	800	-
Computing Resource Fee	4200	-
Day Scholar Total Fees	136840	106395
Hostel Rent (For Hosteller)	8400	8400
Hostel Rent (including water/electricity charges) Boys / Girls (Shared accommodation)		
Hosteller Total Fees	145240	114795

D. Fee structure for M.C.A. Programme (Regular admission) 2024-25

<u>Semester Fees</u>	First Year	
	I Sem.Rs.	II Sem.Rs.
Tuition fee	35000	35000
Other fee (PART A) #		
Institute Admission Fee	1278	-
Development Fee	2558	2558
Security Deposit (refundable)	6384	-
NITK Alma Mater Endowment Contribution	2558	-
Convocation Fee	3150	-
Other fee (PART B)##		
Library Resources Fee	3837	3837
Career Development Fee	2625	-
Health Care Facility	1575	-
Students Activities Fee	6300	-
Campus Amenities	1575	-
Group Insurance coverage of students	800	-
Computing Resource Fee	4200	-
Day Scholar Total Fees	71840	41395
Hostel Rent (For Hosteller)	8400	8400
Hostel Rent (including water/electricity charges) Boys / Girls (Shared accommodation)		
Hosteller Total Fees	80240	49795

E. Fee structure for M.Sc. Programme (Regular admission) 2024-25

Semester Fees	First Year	
	I Sem.Rs.	II Sem.Rs.
Tuition fee	7500	7500
Other fee (PART A) #		
Institute Admission Fee	1278	-
Development Fee	2558	2558
Security Deposit (refundable)	6384	-
NITK Alma Mater Endowment Contribution	2558	-
Convocation Fee	3150	-
Other fee (PART B)##		
Library Resources Fee	3837	3837
Career Development Fee	2625	-
Health Care Facility	1575	-
Students Activities Fee	6300	-
Campus Amenities	1575	-
Group Insurance coverage of students	800	-
Computing Resource Fee	4200	-
Day Scholar Total Fees	44340	13895
Hostel Rent (For Hosteller)	8400	8400
Hostel Rent (including water/electricity charges) Boys / Girls (Shared accommodation)		
Hosteller Total Fees	52740	22295

F. Fee structure for self-financed M. Tech. programme for the year 2024-25

Semester Fees	M.Tech		M.Sc		MBA/MCA	
	First Year		First Year		First Year	
	I Sem.Rs.	II Sem. Rs.	I Sem. Rs.	II Sem. Rs.	I Sem. Rs.	II Sem. Rs.
Tuition fee	200000	200000	100000	100000	300000	300000
Other fee (PART A) #						
Institute Admission Fee	1278	-	1278	-	1278	-
Development Fee	2558	2558	2558	2558	2558	2558
Security Deposit (refundable)	6384	-	6384	-	6384	-
NITK Alma Mater Endowment Contribution	2558	-	2558	-	2558	-
Convocation Fee	3150	-	3150	-	3150	-
Other fee (PART B)##						
Library Resources Fee	3837	3837	3837	3837	3837	3837
Career Development Fee	2625	-	2625	-	2625	-
Health Care Facility	1575	-	1575	-	1575	-
Students Activities Fee	6300	-	6300	-	6300	-
Campus Amenities	1575	-	1575	-	1575	-
Group Insurance coverage of students	800	-	800	-	800	-
Computing Resource Fee	4200	-	4200	-	4200	-
Day Scholar Total Fees	236840	206395	136840	106395	336840	306395

Hostel Rent (For Hosteller) Hostel Rent (including water/electricity charges) Boys / Girls (Shared accommodation)	8400	8400	8400	8400	8400	8400
Hosteller Total Fees	245240	214795	145240	114795	345240	314795

G. Fee structure for Self-Financed M.B.A. Programme for the year 2024-25

Semester Fees	First Year 2023-24 Batch	
	I Sem. Rs.	II Sem. Rs.
Tuition fee	300000	300000
<u>OTHER FEE</u>		
<u>Other fee (PART A)#</u>		
Institute Admission Fee	1218	-
Development Fee	2436	2436
Security Deposit (refundable)	6080	-
NITK Alma Mater Endowment Contribution	2436	-
Convocation Fee	3000	-
<u>Other fee (PART B)##</u>		
Library Resource fee	3654	3654
Career Development Fee	2500	-
Health Care Facility	1500	-
Student Activities Fee	6000	-
Campus Amenities	1500	-
Group Insurance Coverage of Students	600	-
Computing Resource Fee	4000	-
Day Scholar Total Fee	334924	306090
Hostel Rent (For Hosteller) (including water/electricity charges) 1st year Boys & Girls (Shared accommodation)	8000	8000
Hosteller Total fee (Shared accommodation)	342924	314090

Note:

- Tuition fee for every semester is same for all the two years.
- # PART A of other fee is the onetime fee to be paid at the time of admission.
- ## PART B of other fee will be increased @5% every year.

H. Fee structure for Self-Financed M.Sc. (Physics & Chemistry) for the year 2024-25

Semester Fees	First Year 2023-24 Batch	
	I Sem. Rs.	II Sem. Rs.
Tuition fee	100000	100000
<u>OTHER FEE</u>		
<u>Other fee (PART A)#</u>		
Institute Admission Fee	1218	-
Development Fee	2436	2436
Security Deposit (refundable)	6080	-
NITK Alma Mater Endowment Contribution	2436	-
Convocation Fee	3000	-
<u>Other fee (PART B)##</u>		
Library Resource fee	3654	3654
Career Development Fee	2500	-
Health Care Facility	1500	-
Student Activities Fee	6000	-
Campus Amenities	1500	-
Group Insurance Coverage of Students	600	-
Computing Resource Fee	4000	-
Day Scholar Total Fee	134924	106090
Hostel Rent (For Hosteller) (including water/electricity charges) 1st year Boys & Girls (Shared accommodation)	8000	8000
Hosteller Total fee (Shared accommodation)	142924	114090

Note:

Tuition fee for every semester is same for all the two years.

PART A of other fee is the onetime fee to be paid at the time of admission.

PART B of other fee will be increased @5% every year.

I. Fee structure for Self-Financed M.C.A. Programme for the year 2024-25

Semester Fees	First Year 2023-24 Batch	
	I Sem. Rs.	II Sem. Rs.
Tuition fee	300000	300000
<u>OTHER FEE</u>		
<u>Other fee (PART A)#</u>		
Institute Admission Fee	1218	-
Development Fee	2436	2436
Security Deposit (refundable)	6080	-
NITK Alma Mater Endowment Contribution	2436	-
Convocation Fee	3000	-
<u>Other fee (PART B)##</u>		
Library Resource fee	3654	3654
Career Development Fee	2500	-
Health Care Facility	1500	-
Student Activities Fee	6000	-
Campus Amenities	1500	-
Group Insurance Coverage of Students	600	-
Computing Resource Fee	4000	-
Day Scholar Total Fee	334924	306090
Hostel Rent (For Hosteller) (including water/electricity charges) 1st year Boys & Girls (Shared accommodation)	8000	8000
Hosteller Total fee (Shared accommodation)	342924	314090

Note:

Tuition fee for every semester is same for all the three years.

PART A of other fee is the onetime fee to be paid at the time of admission.

PART B of other fee will be increased @5% every year.

J. Fee structure for Ph.D. programme for the year 2024-25

Semester Fees	First Year	
	I Sem Rs.	II Sem Rs.
Tuition fee	7500	7500
Other fee (PART A)#		
Institute Admission Fee	2558	-
Development Fee	2558	2558
Security Deposit (refundable)	6384	-
NITK Alma Mater Endowment Contribution	2558	-
Convocation Fee	3150	-
Other fee (PART B)##		
Library Resource fee	3837	3837
Thesis Processing Fee	6384	-
Thesis Evaluation Fees	19150	-
Career Development Fee	1908	-
Health Care Facility	1575	-
Students Activities Fee	6300	-
Campus Amenities	1575	-
Group Insurance coverage of students	800	-
Computing Resource Fee	6384	-
Day Scholar Total Fee	72621	13895
Hostel Rent (For Hosteller)		
Hostel Rent (including water/electricity charges) Boys / Girls (Shared accommodation)	8400	8400
Hosteller Total fee	81021	22295

K. Fee structure for Ph.D. internal Registrants. (Only for regular faculty/staff of the Institute) for the year 2024-25

Tuition fee	Rs.5000 per year
Institute Development Contribution	Rs.6000 first year
Alumni Fee	Rs.1000 (one-time payment at the time admission)
Convocation fee	Rs.2000/- (1 st Sem Rs.1000/- & 2 nd Sem Rs.1000/-)
Thesis Evaluation Fees	Rs.5000/- (One time at the time of admission)

Note:

PART A of other fee is the onetime fee to be paid at the time of admission. It will be increased @5% every year for every newly admitting batch of students.

PART B of other fee will be increased @5% every year applicable to all students of all the batches irrespective of their year of admission w.e.f. 2024 -25 admission batch onwards

L. Provisional Mess Fees (At Hostel Office) for Hostellers (first semester) for the year 2024-25

1	Admission Fee	1000.00
2	Establishment Charges- Per semester	7500.00
3	Maintenance	3035.00
4	Student Extra Curricular	565.00
5	Mess Advance – Every Semester	20000.00
	Total	32,100.00 Mess Fee structure is tentative subject to revision.

Note: Refund of Fees:

Any student who withdraws admission before the closing date of admission for the Academic Session is eligible for the refund of the all the fees and deposits, after a deduction of a processing fee of Rs.1000/- (Rupees One Thousand Only). Candidates who withdraw the admission after the closing date of admission are eligible for refund of only the caution deposit paid to the Institute. They are not eligible for refund of any other fee. Candidates who are leaving the course after joining are not eligible for any refund.

Any disputes arising out of admissions shall be subject to Mangalore Court jurisdiction.

Ragging: If any incident of ragging comes to the notice of the authority, concerned accused student shall be given liberty to explain and if his explanation is not found satisfactory, the authority would expel him / her from the institution.
